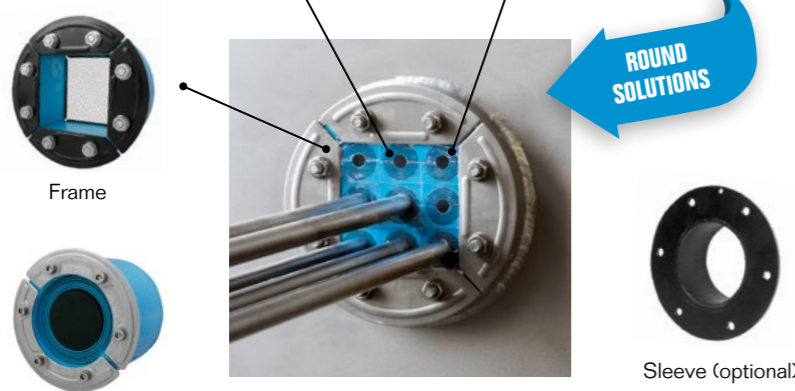


RECTANGULAR SOLUTIONS



ROUND SOLUTIONS

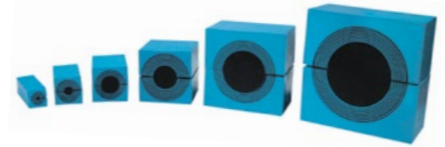


KIT SOLUTIONS

Multidiameter™ by Roxtec

Six module sizes

Our adaptable solution Multidiameter™, based on sealing modules with removable layers, makes installation easy and safe. The modules consist of two halves and a center core. You can seal cables or pipes of several different sizes simply by peeling off layers



from the module halves, until a perfect fit is achieved. If not removed, the center core turns the module into a spare capacity unit.

Standard and customized solutions

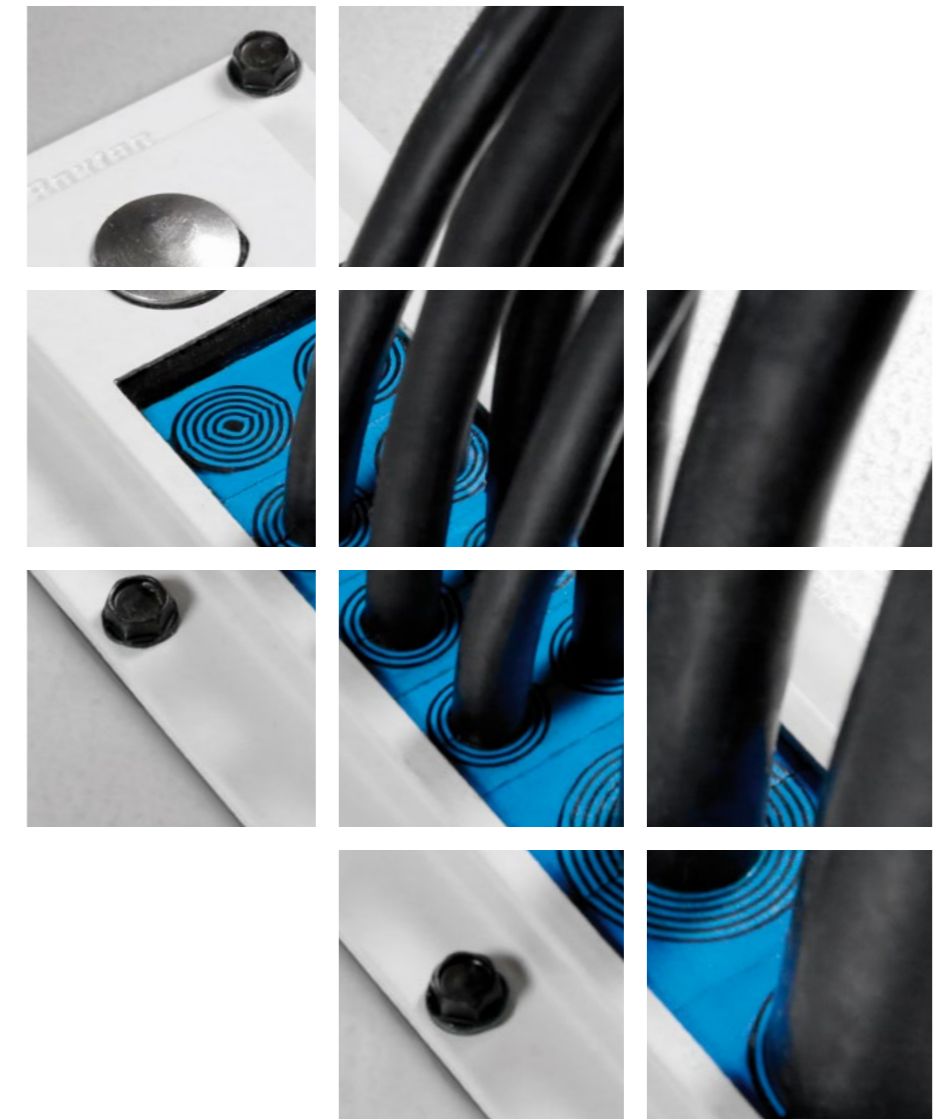
This index contains our standard range of products. If you need help finding a special solution that fits into your design or structure, please do not hesitate to contact

your local Roxtec supplier or e-mail info@roxtec.com for guidance. The list of local Roxtec representatives is available on www.roxtec.com.



PRODUCT OVERVIEW

FLEXIBLE CABLE & PIPE SEALS



SHE2013000201

Ver. 2.0/EN/1517/hogge

Roxtec® and Multidiameter® are registered trademarks of Roxtec in Sweden and/or other countries.

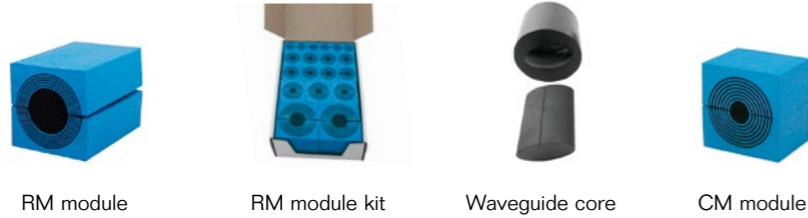


Roxtec International AB
 Box 540, 371 23 Karlskrona, SWEDEN
 PHONE +46 455 36 67 00, FAX +46 455 820 12
 EMAIL info@roxtec.com, www.roxtec.com

We Seal Your World™

Roxtec sealing system

MODULES



RM module RM module kit Waveguide core CM module

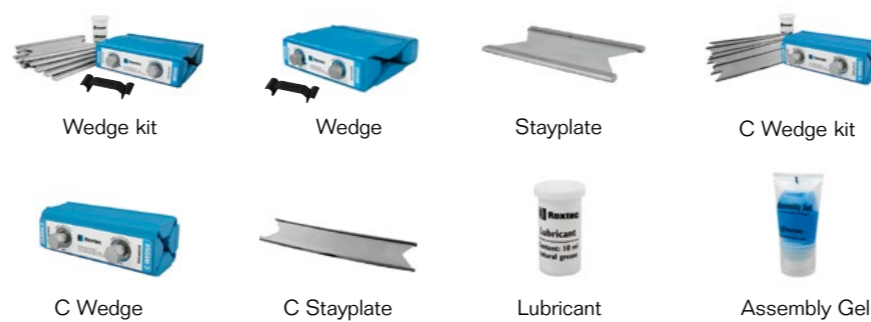
RECTANGULAR FRAMES



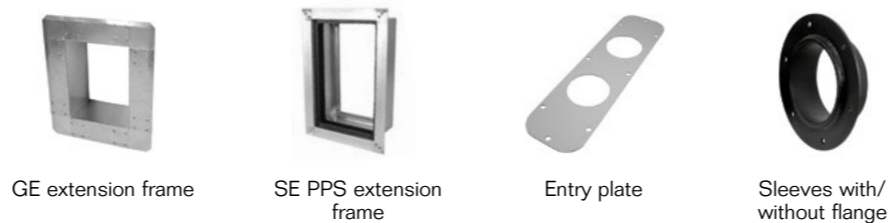
ROUND FRAMES/SEALS



ASSEMBLY PARTS



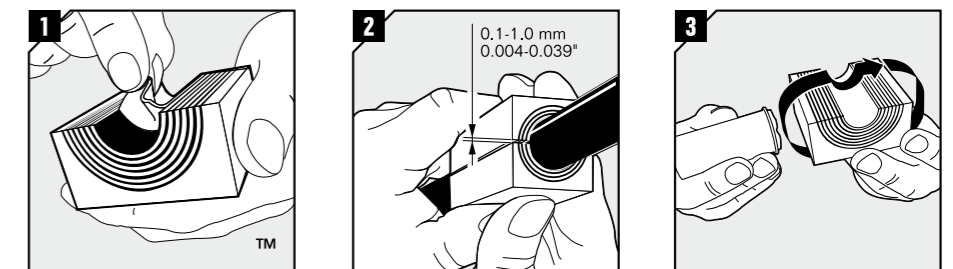
ACCESSORIES



ACCESSORIES



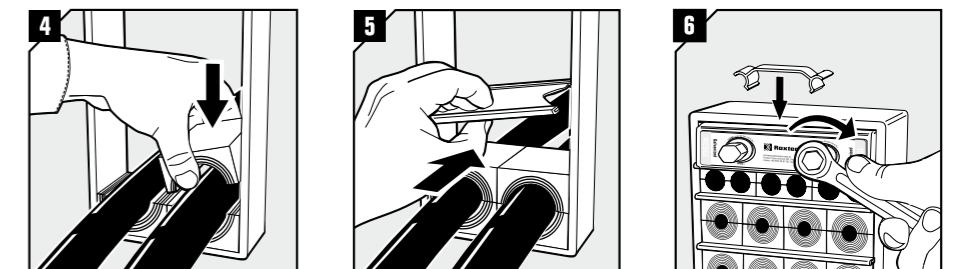
INSTALLATION (BASIC STEPS)



1 Adapt modules, which are to hold cables or pipes, by peeling off layers until you reach the gap seen in pic. 2. The halves may not differ by more than one layer.

2 Achieve a 0.1-1.0 mm gap between the two halves when held against the cable/pipe.

3 Lubricate all modules for the frame thoroughly, both the inside and the outside surfaces.



4 Insert the modules according to your installation plan (transit plan). It is recommended to seal cables/pipes at the bottom of the frame and put spare modules on top.

5 Insert a stayplate on top of every finished row of modules.

6 Insert the Roxtec Wedge and tighten the screws until full stop. Attach the Wedge Clip to the wedge bolts to check that the wedge is properly tightened.

ROXTEC EX SEALING SYSTEM

For product range, please contact your local Roxtec supplier, email: info@roxtec.com, or visit www.roxtec.com.

ROXTEC EMC SEALING SYSTEM

For product range, please contact your local Roxtec supplier, email: info@roxtec.com, or visit www.roxtec.com.