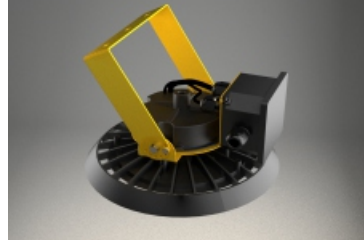
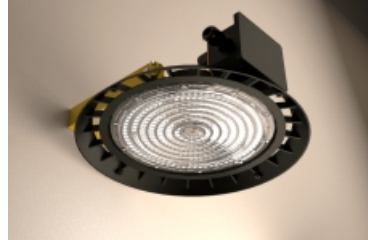
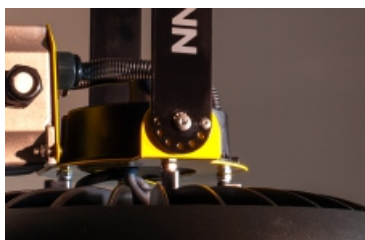
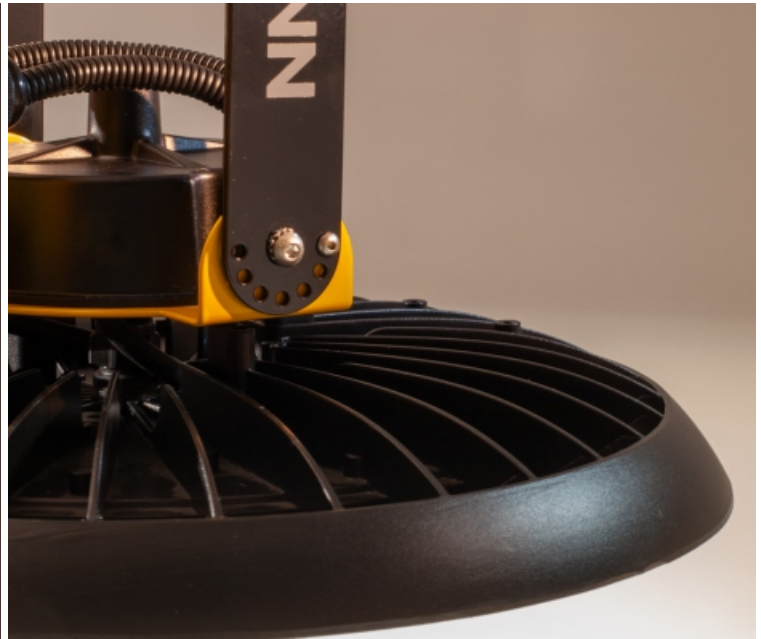




Very high efficacy explosion-proof LED luminaire.



Zone 2 CE Ex II 3G Ex ec nC IIC T5 Gc X
Zone 22 CE Ex II 3D Ex tc IIIC T100°C Dc X

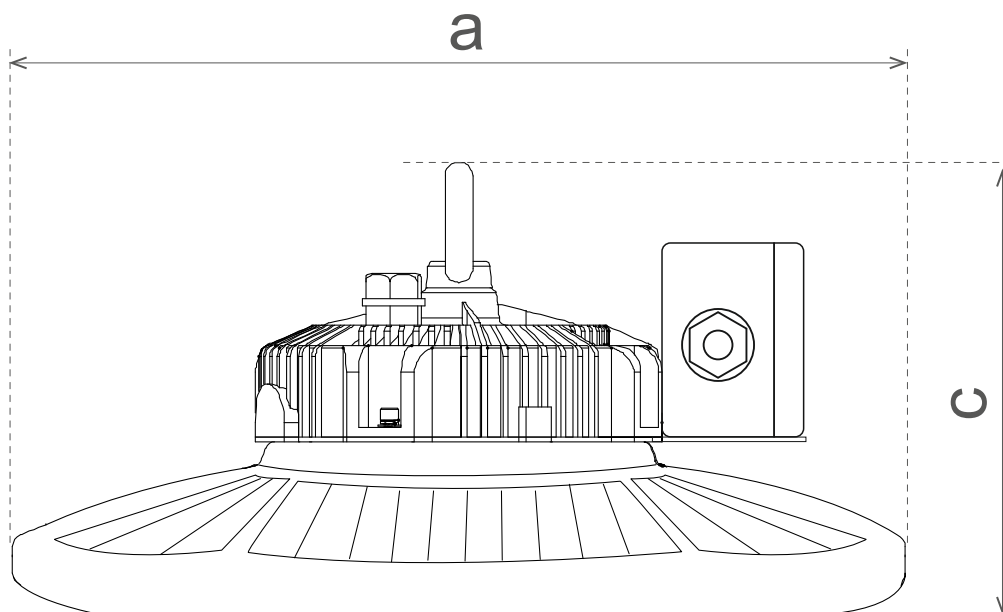
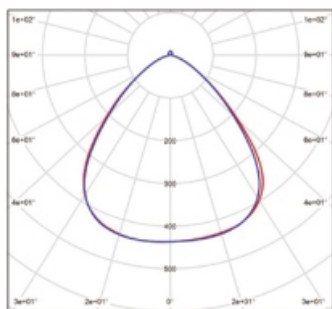
Maximal number of luminaires connected to 1 circuit breaker

The maximum number of luminaires connected to 1 circuit breaker may differ depending on the certain type of the circuit breaker. In each individual case, get contact with the circuit breaker's manufacturer!

Type of luminaire	Inrush current	Max. number of luminaires					
		B10	C10	D10	B16	C16	D16
ExProof HighBay Z2 100	80A / 300 μ s	3	5	9	4	7	14
ExProof HighBay Z2 150	90A / 300 μ s	2	4	8	3	6	13
ExProof HighBay Z2 200	100A / 300 μ s	1	2	4	1	3	6

Type of luminaire	Ex Zone	Max power consumption	Luminous flux of luminaire*
ExProof HighBay Z2 100	Z2/Z22	100 W	16 000 lm**
ExProof HighBay Z2 150	Z2/Z22	150 W	24 000 lm**
ExProof HighBay Z2 200	Z2/Z22	200 W	32 000 lm**

- prominently high luminaire efficacy, up to 160 lm/W
- Zone 2 and Zone 22 certificate
- CRI>80
- robust industrial design
- high quality materials
- different available mounting accessories



Type	A/mm	C/mm	weight/Kg
HighBay 100 W	275	165	2,1
HighBay 150 W	320	190	2,5
HighBay 200 W	380	210	4,1

HighBay Z2 product line is equipped with LED light source. Thanks to the high quality design, the lifetime of the luminaire is very long, more than 55.000 hrs. The service costs are extremely low. The luminaire is can be ordered also with dimmable driver. A universal mounting bracket is included with the luminaire, which enables easy mounting on ceiling. There are different available mounting accessoires too, which permit of wall mounting, hanging or mounting on pipe bridges, lighting poles.

Nominal supply voltage:	100-277 V AC / 220 V DC
Power factor:	>0,96
CCT:	4000K
CRI:	>80 CRI
Beam angle:	90°
IP class:	IP 66
IK class:	IK 10
Suge protection	6 kV
Electric protection:	CLASS I (protective earth)
Surface treatments:	Powder coating
Materials:	aluminium, galvanized steel, PC
Lifetime: L90	>55 000 hrs
Ambient temperature:	-40°C - +60°C